

NAME: Hazardous Location LED Square Light

P/N: LMTV-EPLF01-30WXYZD1-abcde

Note:

- 1、 Where "X" stands for LED manufactory, can be C.
- 2、 Where "Y" stands for Diffuser type, can be "S1" to "S10", can be "T1" to "T5", can be "1H1V" to "7H7V", represents different Diffuser light angle and with flat clear glass, or "CG" represents flat clear glass only.
- 3、 Where "Z" can be "S" or blank, represents "with Wire Guard" or "without Wire Guard", can be "L" or blank, represents "Light shield"
- 4、 Where "a" can be any two letters to represent color of luminaire.
- 5、 Where "b" can be "FM", "U", "PM", "AM", "DM", "A&DM", "RAM", represent bracket typet" .
- 6、 Where "c" can be "NPT" for 3/4" NPT threaded pipe wiring
- 7、 Where "d" can be 27, 30, 40, 50, 57, 65 to represent CCT.
- 8、 "e" can be "W" or blank for Power Control provided or not.

Advantage:

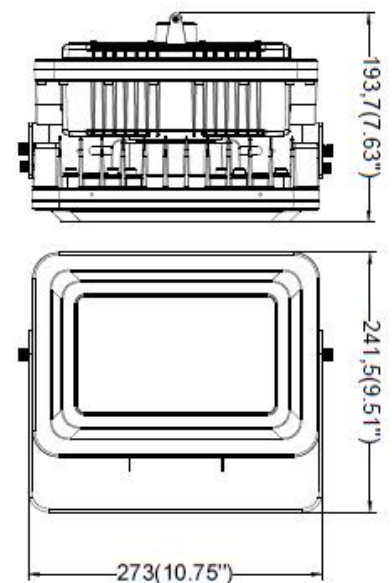
- Input voltage 120-277VAC.
- No UV or IR in the beam.
- Easy to install and operate.
- Energy saving, long lifespan.
- Light is soft and uniform, safe to eyes.
- Instant start, NO humming.
- Green and eco-friendly without mercury.

CERTIFICATIONS:

- CI D1 Groups C,D.T6;
- CI D2 Groups C,D.T5.
- UL 844.
- UL 1598.
- UL 1598A.
- UL 8750.
- CSA C22.2 No.137.0.
- CSA C22.2 No.250.0.
- CSA C22.2 No.250.13.

Application:

- Warehouse, factory and workshops;
- Petroleum and petrochemical area, and gas station;
- Power, railway, ship port, public security, fire protection and other fields.



Product Specifications

Product name	Hazardous Location LED Square Light
Part No	LMTV-EPLF01-30WXYZD1-abcde
Dimension	273x241.5x193.7 mm 10.75" x9.51" x7.63"

Technical Characteristic

Color temperature	3000K - 6500K		
CRI	>70		
Cover	clear glass	clear glass + wire guard	clear glass + Light shield
Lumen	4050 LM	3750 LM	3600LM
Lumen Efficacy	135 LM/W	125 LM/W	120 LM/W
Viewing Angle	140° ×120° (7H6V) ; (T1-T5,5H5V-7H7V,S1,S3-S9,110°)		
Input Power	30W		
Input Voltage	100-277VAC 50/60Hz		
Driver Brand	China Brand Driver (L/N-PE: 6KV L-N: 6KV)		
PF	>0.9		
THD	≤20%		
Waterproof Rating	WET (IP66)		
Explosion-proof Mark	North America: Class I ,Division 1,Groups C,D, T6; Class I ,Division 2,Groups C,D, T5		

Materials

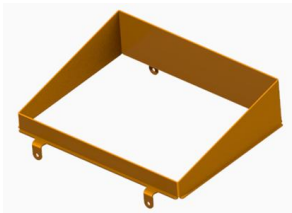
LED Brand/ LED Type	Bridgelux / SMD3030 (1W)
LED QTY	112 PCS
Housing	Aluminum Alloy
Housing color	Any Colors
Cover	Clear Glass

Others

Operating Temperature	-40℃ TO 65℃
Operating Humidity	10%-90% RH
Storage Temperature	-40℃ TO 80℃
Storage Humidity	10%-95% RH
Application	Indoor/Outdoor
Safety Certification	UL/cUL
Warranty Time	5 Years

Light Distribution Testing Parameters

Optional Accessory



Light shield



PM-Installation mode of road lamp pole



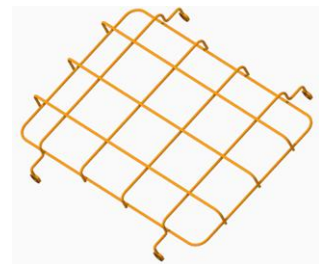
FM-shape buckle



HM-Hchain mount



cable mount



WG-wire guard



AM



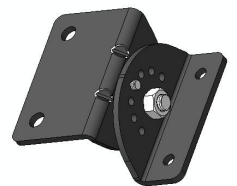
DM



A&D



RAM



CM-side surface mount

Package

		clear glass	clear glass + wire guard	clear glass + Light shield
Lamps Net Weight				
Outer box	size			
	Qty/ Carton	PCS		
	Weight/Carton			

Notice For User

- ◆ when installing the conduit, remove the compression nut on the screw thread of the lamp. Requirement of waterproof for fixture connection and requirement of conduit system connection should according to the local regulations.
- ◆ Please turn off power before install or change assembly parts.
- ◆ The input voltage and lamps should be matched, after connecting the power line, Please make sure the wiring section is insulated.
- ◆ No-professionals, must not install and disassemble the lamps.

Trouble Shootings

Troubles	Check points
Flickering of the light	Turn off the power and turn on again in 3 minutes. If same phenomena occur, then call agencies.
Out of working	Please check the connection.